



NORTH BRANCH

—Minnesota—

Charles Klopp
Chair

Bob Bernier
Commissioner

Farfum Ladroma
Commissioner

Lynn Wilson
Commissioner

Wendy Chelberg
Commissioner

**PARKS, TRAILS AND OPEN SPACE
COMMISSION
REGULAR AGENDA
MONDAY, FEBRUARY 3, 2025 @ 7:00 PM
CITY HALL, 6408 ELM STREET, NORTH
BRANCH, MN 55056**

1. CALL TO ORDER
2. PLEDGE OF ALLEGIANCE
3. OATH OF OFFICE
 - a. Oath of Office - Bernier and Ladroma INFO
4. ROLL CALL
5. AGENDA APPROVAL
 - a. Approve Agenda ACTION
6. PUBLIC COMMENT
7. CONSENT AGENDA
 - a. Approval of January 6, 2025 Minutes ACTION
8. REPORTS
 - a. Election of Officers - Parks, Trails and Open Space Commission ACTION
 - b. Park Dedication Fund INFO
 - c. Project Updates INFO
 - d. Sherwood Pines Minor Subdivision ACTION
 - e. PTOS Strategic Plan INFO
9. NEXT MEETING - March 3, 2025 - 7 PM
10. ADJOURNMENT



Prepared By: Nathan Sondrol, Community Development Director

Presenter: Nathan Sondrol, Community Development Director

Date: 01/27/2025

Board & Commission: Parks, Trails and Open Space Commission

Subject: Oath of Office - Bernier and Ladroma

The City Council appointed Bob Bernier and Farfum Ladroma to the Parks, Trails and Open Space Commission at the January 14, 2025 meeting.

The oath of office will be administered at the meeting.

Below are the new appointment terms.

Bob Bernier - Term Expires - December 31, 2027

Farfum Ladroma - Term Expires - December 31, 2027

Voting Requirements:

Voting Options Simple Majority



Prepared By: Nathan Sondrol, Community Development Director

Presenter: Nathan Sondrol, Community Development Director

Date: 01/27/2025

Board & Commission: Parks, Trails and Open Space Commission

Subject: Election of Officers - Parks, Trails and Open Space Commission

Background Information:

The Parks, Trails and Open Space Commission, per Section 2-182 of City Code "shall elect a chair and a vice-chair from among its appointed members, each for a term of one year". These roles must be filled yearly.

The chair's role is to run the meeting and the vice-chair is to run the meeting in the absence of the chair.

Staff Recommendation:

Elect a chair.
Elect a vice-chair.

Requested Action:

Elect a chair and vice-chair for 2025.

Voting Requirements:

Voting Options **Simple Majority**



NORTH BRANCH
City of North Branch
Staff Report

Prepared By: Nathan Sondrol, Community Development Director

Presenter: Nathan Sondrol, Community Development Director

Date: 01/27/2025

Board & Commission: Parks, Trails and Open Space Commission

Subject: Park Dedication Fund

Park Dedication Fund Balance	\$204,456.45
<i>Committed Funds</i>	
Meadows North Park	\$6,459.75
Riverwalk Dome Structure Electric	\$3,000.00
Disc Golf Course	\$3,635.53
CSAH 30 SRTS Trail	\$33,962.00
Northwood Pickleball Court/Site Imp	\$16,782.55
Harder/Tower Ballfield Fencing	\$970.00
Tower Fields Drainage	\$6,654.88
<i>Total Committed Funds</i>	<i>\$71,464.71</i>
Adjusted Balance	\$132,991.74

Community Center Fund (475)	\$172,194.06
Park Improvement Fund (403)	\$102,002.13
<i>Committed Funds</i>	
Fox Run PUD	\$60,000.00
Lions Park Benches	\$600.00
ECRAC Summer Concerts 2023	\$650.00
MERC Foundation HP Field 1 Dugouts	\$6,000.00
<i>Total Committed Funds</i>	<i>\$67,250.00</i>
Park Improvement Fund Adjusted Balance	\$34,752.13

Voting Requirements:

Voting Options Simple Majority



Prepared By: Nathan Sondrol, Community Development Director

Presenter: Nathan Sondrol, Community Development Director

Date: 01/27/2025

Board & Commission: Parks, Trails and Open Space Commission

Subject: Project Updates

Voting Requirements:

Voting Options Simple Majority

Parks, Trails & Open Space Commission Project Updates

Current Projects	Progress and Next Steps	Approval Date	Estimated Completion Date	Estimated Cost
Northwood Park Pickleball Court and Site Improvements	The City received a grant of \$140,000 from the Outdoor Recreation grant program from the DNR. The bids were awarded for the pickleball courts to Winberg Companies LLC. The playground surfacing has been replaced by public works and the base grading for the trail is completed. The pickleball courts complete. Site amenities including benches trash receptacles,etc and pathways are in the process of being installed. Improvements will be completed in Spring 2025	3/23	Spring 2025	Total \$280,000 City Match \$140,000
Skating Rinks	The warming houses have been staffed at the main rink and HS hockey rink with good attendance.			
Clayton Anderson Park	The PTOS Commission recommended approval of up to \$2,500 to acquire and place the limestone rock in the park. The City Council approved this at their April 9, 2024. The limestone has been moved to the park. The CCMG are looking to establish an Oak Savanna at the park. . They will be continuing the buckthorn removal from the park and are looking to remove the knapweed.			
Harder Park Dense Forest	Dawn White and the CCMG are looking to remove the fencing and drip irrigation at the dense forest at HP and are looking for reusing the materials at another location.			
Riverwalk Park	Natural Space Domes donated the dome structure at the park. They would like to add a plaque at the dome structure. Below is proposed language: <i>This Park Dome was donated by Natural Spaces Domes of North Branch in memory and honor of MN State Senator Janet Johnson and Kids for Saving Earth founder 11 year old Clinton Hill. Both were defenders of the Planet (R) and would want you to work to protect our beautiful Earth.</i>			
Park Signage	The City Council approved the purchase of new monument signage at 7 parks. The signs have been installed at all parks except Tower Fields and Central Park. These will be installed after construction at each location.	3/23	Summer 2024	
Harder Park Disc	The NBDGA is in the process of designing signage	6/23	Spring 2024	

Golf Course	for the course. The PTOS commission approved moving forward with the concept kiosk and to bring the final design back for approval. The City Council approved the NBDGA funding request of \$5,000 for alternate short tees and an alternate basket location for full build out of the course. The tee pads and kiosk sign will be installed in the spring. Trees have been planted around the course. A draft kiosk sign has been created. Public Works will be working with the NBDGC on site/landscaping improvements at the park for the kiosk. New concrete tee pads were installed on the course			
Ballfield Improvements	The fencing improvements at Harder and Tower Park have been completed. Future improvements to be addressed are a glime, dugout roofs; drainage, base/bench replacement and fence toprail covers;	Dec 2022	Fall 2023/Spring 24	\$125,000
MERC Grant	The City received grant funding for new dugout roofs for Field 1 at Harder Park. These will be installed in Spring 2025		Spring 2025	
RJMP	The Commission recommend city staff work with the Football association to identify improvements to fields, lighting and storage at the park.			
Veterans Memorial	The City Council approved the site plan and MOU with the North Branch Veterans Memorial Group at the July 25, 2023 meeting and are working on their marketing and fundraising efforts. The coming soon sign has been installed in the park. The City Council approved the fiscal agreement.		2025/2026	
Tower Fields Drainage Improvements	The City was notified that it received a \$7,000 grant from the MN Twins – Field for Kids Grant for drainage improvements to Tower Fields. The City Council approved up to \$13,000 to complete the drainage improvements in fall 2023. The City has been notified that it will be provided an additional \$8,000 of funding thanks to player donations for the full grant request amount of \$15,000!		Spring 2024	
Flink Ave Trail Sunrise Bluff 2 Phase II (Co Mkt – 392)	City Staff submitted a grant to MNDOT AT program received funding of \$574,332 to complete the trail section. The City Council approved the final engineering for the project with construction planned to start in June 2025.		June 2025	\$99,901
Safe Route to Schools	The City Council recommended approval of submitting the grant application to construct a trail along the east side of CSAH 30 from 379 th St to		June 30, 2025	

CSAH 30 Trail	Maple St and on Maple St from CSAH 30 to Oak St at the 12.7.21 meeting The estimated engineering City Cost is \$55,004.90. The City has been notified that the project was selected for funding in the amount of \$366,700. The Council approved the plans and specs and the project is out for bid. The bids came in below budget and project is expected to begin Spring 2025			
SRTS Plan	The SRTS Plan is over 12 years old and is need of an update. Will look to apply for grant funding to update this. Grants notifications will be July 2025.		2025	
Arts Grant	The Council approved the summer concert grant application and staff were notified the grant was awarded. Keith Secola has been added and a Hard Days Night will be rescheduling to another Tuesday.			
	Minnesota State Band	6/17/2025		
	Native American Dance and Drum Exhibit/Keith Secola	6/24/2025		
	Monroe Crossing	7/8/2025		
	Whitesidewalls	7/15/2025		
	Hard Days Night	7/22/2025		
	Church of Cash	7/29/2025		
Pollinator Friendly City/Monarch Community	The legislature approved language allowing property owners to maintain native prairies on all properties. The city will need to amend its existing ordinances to align with this.			
Tree City	The CCMG planted 8 trees in Clayton Anderson park despite the rained out Arbor Day event. City staff are working on tree ordinance and will bring it to the December meeting for review/discussion.		Spring 2025	
Skateboard Park	The Commission and Council approved the replacement of the surfacing at the skateboard park. Public Works has installed the new ramp surfaces and the park is getting a lot of use. 3 rd Lair has held provided a concept of a tiered quarter pipe. The PTOS Commission discussed providing up to \$4,000 in funding match for a tiered quarter pipe.	5/3/21		
Williams Park Community Garden	The community gardens have been tilled up for the season and are accepting applications for garden plots for 2025.			
Malmquist Property	The PTOS Commission recommended to strongly support Mr. Malmquist's proposal for his property to be entrusted to the city at the appropriate time and to care and that the city would care best for it			

	and properly use it at the 1/9/23 meeting. City Staff is working with Mr. Malmquist on next steps. An appraisal (\$3,500 - \$5,000) would be required for DNR grant acquisitions. City staff met with the MN Trust for Public Lands to explore options to help protect the site until grant funding could be acquired.			
North Branch Beautification Association	The NBBA is continuing to work on the Vet Memorial, Flower Baskets, Banners and Memorial Benches.			
Splash Pad	The Commission and City Council have identified a splash pad as top priority improvement and has discussed Williams Park as the location for the splash pad to be tied to a community center location. The Commission discussed hosting a community input meeting on the desired amenities and type of facility the community would desire in in winter 2024. The City is conducting a facility assessment and will help guide the location for a future community center. The Commission would like to hold a joint meeting with other commissions and council through this process.			
Strategic Parks, Trails and Open Space Plan	The City Council approved the Comprehensive Plan at the Oct 23, 2018 meeting. The next steps will be to develop a strategic plan and implementation. Including a bicycle/pedestrian plan and development of a bike friendly community initiatives and to accommodate site amenities within the design i.e. benches at various locations. This is an agenda item. A facility assessment is in the process of conducted and is estimated to be completed in mid-July 2024.		Spring 2025	
Subdivision Review				
Westside Commons	The PTOS Commission recommended the acceptance of cash and to work with the developer on the construction of the extension of the trail from 386 th St to TH95. The developer has agreed to construct the trail from 386 th St to TH95 and will receive a credit for park dedication fees.	3/6/23		
Westside Commons Sr Housing	The PTOS Commission recommended the acceptance of cash on 10/7/24			
Preserve at Spring Hill 2	The PTOS Commission recommend the acceptance of cash on 9/9/24			
Sneep Acres	The PTOS Commission recommended the			

	acceptance of cash on 11/04/2024.			
Sunrise Bluff 3	The PTOS Commission recommended the acceptance of the construction of the trail from Everett Ave to Flink Ave along 392nd St and to accept the dedication of the land along the Sunrise River and to provide an easement across the west outlot to extend the access to the west of the development.	4/1/24		
Meadows Ridge (LGI)	The PTOS Commission reviewed and recommended approval of the open space in the preliminary plat and recommend the acceptance of cash for units above the park credit utilization area. A park credit utilization area was approved and has been paid for up to 591 total units to be constructed. 308 units have been platted to date.	9/11/23		
Chain Lake Shores	The PTOS Commission reviewed the concept plan and provided feedback of a combination of cash and land for park dedication with a more detailed review with a preliminary/final plat submittal.	9/11/23		
Townsedge Master Plan	The PTOS Commission to recommend an acceptance a combo of land and cash for park dedication funds with the land not to exceed 4 acres.	5/2/22		
Casselberry Outlot	The PTOS Commission requested the City Council to reserve the parcel of land located at the northeast corner of Lincoln Trail and Hemingway Ave as park/open space. The City Council discussed this at their November 10, 2022 meeting and noted that the parcel is being reserved as right-of-way for a future intersection improvement (2027) and that any additional space would be preserved as park/open space.		2027	
Long-term Planning and Goals	Progress and Next Steps			
CIP 2024-2035	The Commission discussed focusing on Williams Park and to add the Malmquist Property, Luchts Trail Connection and park expansions to the CIP. The City Council will be reviewing in May/June 2023. – Additional resident support has been provided for the Luchts Crossing trail connection.			
Council Commission	The PTOS Commission appointed Lynn Wilson to serve on the planning committee			

Northwood Park	Pickleball Court, Playground Resurfacing, Walkways	DNR Grant/	2024	\$240,000
Splash Pad	Location to be determined		2024	\$300,000
Park Signage	Install uniform signage in all parks		2024	\$20,000
Central Park	Basketball Court resurfacing		2025	\$25,000
Northwood Park	Parking Lot Resurfacing		2025	\$20,000
Northwood Park	Basketball Court resurfacing		2025	\$25,000
Co Rd 30 Trail	379 th St to Maple St (East side)	<i>Final Design</i>	2025	\$500,000
Co Rd 30 Crosswalk	Pedestrian crossing near the library to Sunrise Prairie Regional Trail	<i>Final Design</i>	2025	\$600,000
Flink Ave Trail Phase II	Trail connection from existing trail to 392 nd St to NB Marketplace.	<i>Grant ?</i>	2025	\$600,000
Harder Park	Parking Lot microsurfacing		2025	\$65,000
Falcon Ave Trail	385 th – 386 th St		2025	\$55,000
RJMP	Parking Lot Microsurfacing		2025	\$20,000
Outdoor Archery Range	Location to be determined		2025	\$42,000
Malmquist Property	Acquisition and Development		2025	\$600,000
Sunrise Prairie Regional Trail	Maintenance		2026	\$6,000
Wildridge Park	Park Development – parking lot, soccer fields		2026	\$545,000
Williams Park	Park Development		2026	\$1,850,000
Clayton Anderson	Parking lot surfacing		2026	\$200,000
Harder Park Trail Connection			2026	\$1,000,000
Northwood Park Playground Equipment	Replace existing playground equipment		2026	\$100,000

Luchts Crossing	Park Development		2027	\$100,000
Wildridge Park	Basketball Court Resurfacing		2027	\$20,000
Luchts Crossing Trail Connection	Trail Connection from Luchts Crossing to Casselberry		2027	\$100,000
Northwood Park	Irrigation System		2028	\$70,000
Tower Fields	Irrigation System		2028	\$70,000
Townsendge Park	Park Development		2028	\$200,000
Harder Park Playground Equipment	Replace existing playground equipment		2028	\$100,000
North Branch Oaks Playground Equipment	Replace existing playground equipment		2028	\$100,000
Tower Fields	Parking Lot Paving		2029	\$70,000
Meadows North Park	Expansion to west		2029	\$50,000
Dog Park	Dog Park Development - Location TBD		2030	\$30,000
Roger Johnson Playground Equipment	Replace existing playground equipment		2030	\$
Roger Johnson Park	Expansion to east		2031	\$80,000
Sunrise Prairie Regional Trail	Maintenance		2032	\$6,000
Wildridge Park Playgrund Equipment	Replace existing playground equipment		2032	\$100,000
Grand Ave Trail	Pedestrian bridge across Sunrise River		2033	\$515,000



Prepared By: Nathan Sondrol, Community Development Director

Presenter: Nathan Sondrol, Community Development Director

Date: 01/13/2025

Board & Commission: Parks, Trails and Open Space Commission

Subject: Sherwood Pines Minor Subdivision

Overview / Background

MAKE Properties has submitted a preliminary plat application for a plat named Sherwood Pines. The proposed plat is located on the east side of Flink Ave near the intersection of 417th Street and adjacent to Interstate 35. The property address is 41623 Flink Ave. The proposed plat would create a total of 4 lots including (1) one existing home and 1 outlot.

Discussion/Analysis

State Statute allows cities the ability to require that a reasonable portion of the buildable land of any proposed subdivision to be dedicated to the public to address infrastructure needs created by the development; including, parks, recreational facilities, playgrounds, trails, sidewalks, wetlands and open space.

In lieu of land dedication for parks, recreational facilities, playgrounds, trails, wetlands or open space, cities may require a developer to pay cash or “park dedication fees.” Park dedication fees excuse the developer from a local land dedication for park and recreation purposes, but still allow the city to purchase and acquire new, off-site facilities to serve the recreation needs created by the subdivision.

Sec. 54-465. Conditions for contributions.

It shall be deemed to be in the public interest to require land dedication, cash contribution, or any combination thereof when the city council after review and recommendation makes one or more of the following findings of fact:

(1) All or part of the proposed subdivision has been designated as park, playground, public open space, storm sewer holding areas or ponds on an adopted city plan;

- (2) Such contribution is necessary in order to protect adjacent land uses from potential conflicting land uses which could exist on the land subdivided;
- (3) The increased number of residents to reside or be employed within the subdivision will increase the recreational demands upon the city;
- (4) The land proposed to be subdivided contains or borders upon existing unique topographical features including but not limited to ponds, lakes, streams, timber stands, water holding areas, hills, steep slopes, drainage areas, or bluffs which should be preserved to prevent foreseeable safety, pollution, or erosion hazards or to provide unique recreational and aesthetic qualities and enjoyment to the city; Such contribution is necessary to comply with or fulfill the goals, policies, and programs of the city.

2. Development Plan

The Developer is proposing to subdivide the property into 4 lots and 1 outlot and keeping the existing home site. The nearest park would be the Meadows North Park.

The majority of the site is relatively flat, has predominately loamy fine sand soils with one small wetland identified on the property. The landcover consists of northern pin oak, red and white pine and grassland.

There are no existing trail networks located adjacent to the property.

Based on North Branch City Code and the current fee schedule, the following options are available for park dedication for the proposed development.

Cash Option	3 Lots @ \$1,800 per lot = \$5,400
Land Option	10% of land = 1.8 acres
Cash/Land Option	Various Combinations of the above

Deadline: February 3, 2025

Staff Recommendation

Staff recommends acceptance of a cash for the proposed development as the increased number of residents within the subdivision will increase the demands upon the city parks, trails and open space system.

Requested Action

The requested action is for the Commission to make a recommendation to deem the public interest to require land dedication, cash contribution, or any combination thereof for the Sherwood Pines development.

Voting Requirements:

State Law or City Code requires a simple majority, of those present.

Attachments:

- 1) Sherwood Pines Preliminary Plat
- 2) Comprehensive Parks, Trails and Open Space Plan

Voting Requirements:

Voting Options Simple Majority

PRELIMINARY PLAT SHERWOOD PINES

PROPERTY DESCRIPTION:

Title Commitment: Stewart Title Guaranty Company, Dated October 29, 2024, Office File No. 2024-233195
The Southeast Quarter of the Northwest Quarter (SE 1/4 of NW 1/4) of Section Five (5), Township Thirty-five (35), Range Twenty-one (21), Chisago County, Minnesota.

SURVEY NOTES:

- Orientation of this bearing system is based on the Chisago County Coordinate System NAD83 (1996 adj.)
- Vertical Control: MNDOT "HARRIS MNDT AZ MK" Elev. -921.55 NAVD88.
- The address of the property is 41623 Flink Ave., North Branch, MN 55056. PID No. 11.00070.00
- The total acreage of the property is 1,721,458 Sq. Ft. or 39.52 Acres.
- Contours shown are LIDAR contours from MN DNR on NAVD88 datum
- Building pads, driveways, septic areas, and wells are approximate only.

DEVELOPMENT REGULATIONS	
SINGLE FAMILY LOTS	
FRONT SETBACK	40 FT.
REAR SETBACK	30 FT.
SIDE SETBACK (INTERIOR)	10 FT.
SIDE SETBACK (CORNER)	30 FT.
MINIMUM WIDTH	110 FT.
MINIMUM DEPTH	300 FT.
WETLAND	40 FT.
WETLAND BUFFER	20 FT.
LOWEST FLOOR ABOVE HIGHEST KNOWN GROUNDWATER LEVEL	3 FT.
LOWEST FLOOR ELEVATION ABOVE 100-YEAR FLOOD ELEVATION	2 FT.

SITE DATA	
ZONING:	RURAL RESIDENTIAL
FUTURE LAND USE:	SINGLE FAMILY RESIDENTIAL
GROSS AREA:	1,721,458 SQ. FT. / 39.52 AC.
GROSS SITE DENSITY:	4/39.52 = 0.10 DUA
PROPOSED ROW:	35,924 SQ. FT. / 0.82 AC.
PROPOSED NEW EASEMENTS:	49,567 SQ. FT. / 1.14 AC.
*NET AREA:	1,636,540 SQ. FT. / 37.57 AC.
NET SITE DENSITY:	4/8.60 AC. = 0.47 DUA
* GROSS AREA - EASEMENTS - ROW	

AREA SUMMARY	
BLOCK 1 =	374,510 SF. 8.60 AC.
TOTAL LOT AREA =	374,510 SF. 8.60 AC.
TOTAL OUTLOT AREA =	1,311,397 SF. 30.11 AC.
TOTAL R/W AREA =	35,924 SF. 0.82 AC.
TOTAL AREA =	1,721,831 SQ. FT. 39.52 AC.

WETLAND DELINEATOR
EARTH SCIENCE ASSOCIATES INC.
37445 GRAND AVENUE
NORTH BRANCH, MN 55056
(612) 718-0413
DATE: 01/03/2025

OWNER & DEVELOPER
MaKe PROPERTIES LLC
21542 SHALLOW LAKE RD
WARBA, MN 55793
(651) 226-4039

ENGINEER/LAND SURVEYOR
WIDSETH
5368 266TH STREET
WYOMING, MN 55092
PHONE (651) 464-3130

SOIL TESTER
JOSH PUTT LIC #L4063
PO BOX 45
SHAHER, MN 55074
651-900-1567
TEST DATE: 11-18-2024

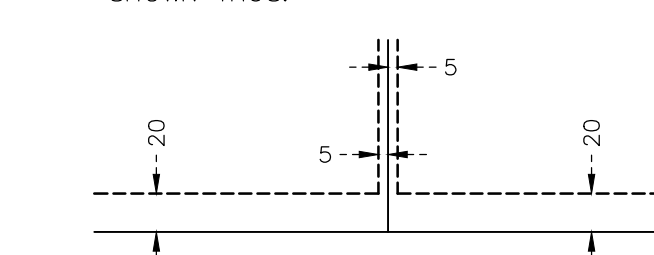
FLOODPLAIN NOTES: FLOOD INSURANCE RATE MAP (FIRM)

COMMUNITY NO.	PANEL NO.	SUFFIX	DATE OF FIRM INDEX	FIRM ZONE
27025	0165	D	04/17/2024	X

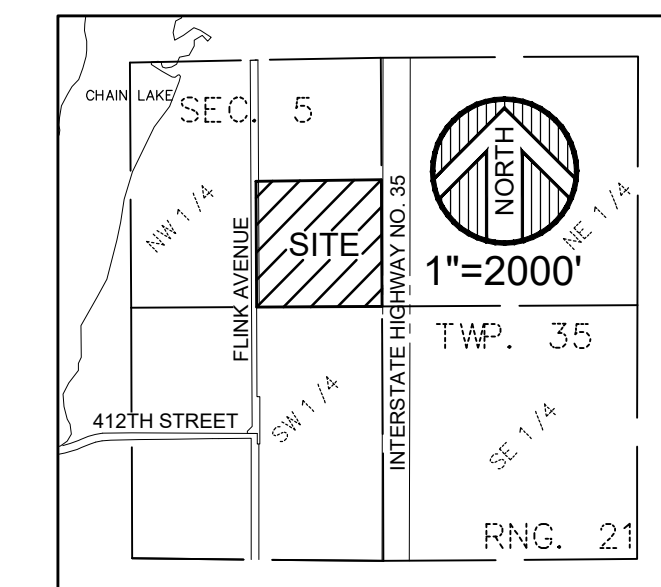
LEGEND

- DENOTES A CHISAGO COUNTY RIGHT OF WAY MONUMENT
- DENOTES A FOUND 1/2" IRON PIPE MONUMENT CAP NO 6260 UNLESS NOTED OTHERWISE
- DENOTES A SET 1/2" IRON PIPE MONUMENT CAP NO 42648
- ⊗ DENOTES A SET MAGNETIC NAIL W/WASHER INSCRIBED 42648
- ⊕ POWER POLE
- ⊔ TELE PEDESTAL
- ⊕ GUY ANCHOR
- ⊕ EXISTING WELL
- ⊕ FENCE POST
- ⊕ MAIL BOX
- ⊕ AC UNIT
- ⊕ SEPTIC COVER
- ⊕ ELECTRIC LIGHT POLE
- ⊕ ELECTRIC METER
- ⊕ GAS METER
- ⊕ TV PEDESTAL
- ⊕ SOIL BORING
- ⊕ PROPOSED WELL
- BUILDING SETBACK LINE
- BITUMINOUS SURFACE
- GRAVEL SURFACE
- OHE --- OVERHEAD ELECTRIC
- UGE --- UNDERGROUND ELECTRIC
- FOC --- FIBER OPTIC CABLE
- BARBED WIRE FENCE
- WOOD FENCE
- SINGLE CHAIN FENCE
- WOOD LINE
- DENOTES WETLAND DELINEATED BY EARTH SCIENCE ASSOCIATES INC. DATED 01/03/2025

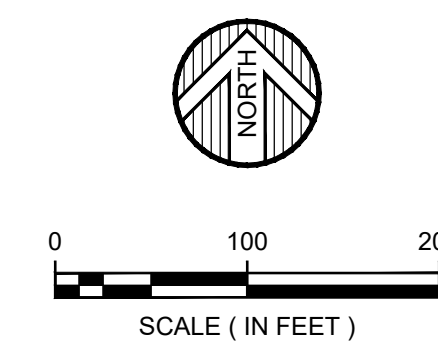
DRAINAGE AND UTILITY EASEMENTS ARE SHOWN THUS:



BEING 20 FEET IN WIDTH ADJOINING STREET LINES AND 5 FEET IN WIDTH ADJOINING LOT LINES, UNLESS OTHERWISE SHOWN ON THIS PLAT.



VICINITY MAP
SEC. 5, T35, R.21
CITY OF NORTH BRANCH
CHISAGO COUNTY, MINNESOTA

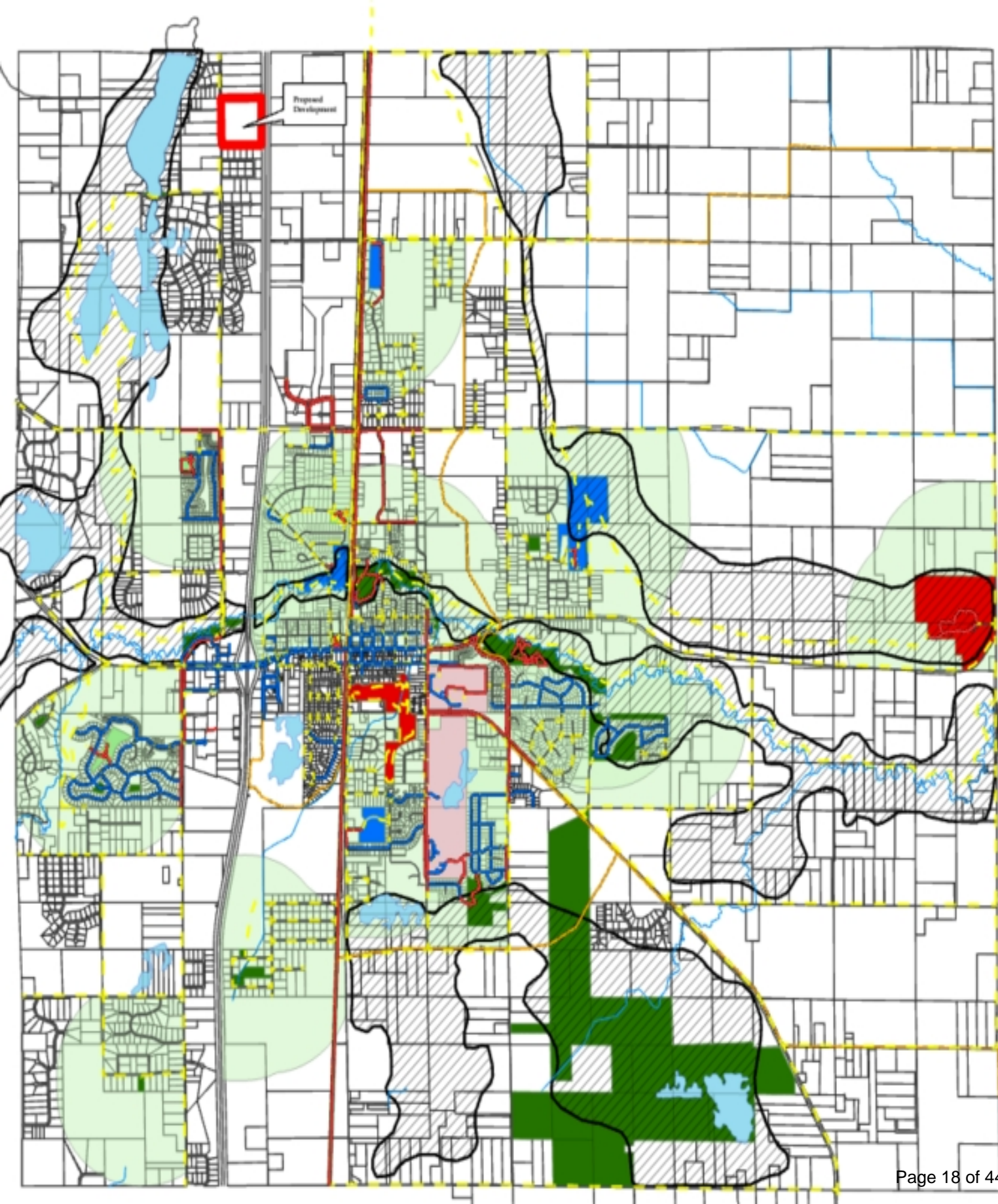


DATE:	December 2024	DATE:	01/08/2025	AMENDMENTS:	Added wetland data to drawing	BY:	JAS	PREPARED FOR:	MaKe PROPERTIES LLC
SCALE:	AS SHOWN							I HEREBY CERTIFY THAT THIS SURVEY, PLAN, OR REPORT WAS PREPARED BY ME OR UNDER MY DIRECT SUPERVISION AND THAT I AM A DULY LICENSED LAND SURVEYOR UNDER THE LAWS OF THE STATE OF MINNESOTA.	
DRAWN BY:	JMM							<i>Kelly L. Jordan</i>	
CHECKED BY:	KLJ								
FILE NUMBER:	2024-11929							Kelly L. Jordan	DATE: 12/23/2024 LIC. NO. 42648

© 2025 WIDSETH SMITH NOLTING & ASSOCIATES, INC.

WIDSETH

ARCHITECTS ■ ENGINEERS ■ SCIENTISTS ■ SURVEYORS



Proposed Development



Prepared By: Nathan Sondrol, Community Development Director

Presenter: Nathan Sondrol, Community Development Director

Date: 01/27/2025

Board & Commission: Parks, Trails and Open Space Commission

Subject: PTOS Strategic Plan

Background Information:

The PTOS Commission has been working on reviewing the city's existing parks, trails and open space inventory and conducting a needs analysis. The Commission has reviewed each of the sites and has compiled and ranked priorities for each of the park sites based on community input and provided input on the City's 10 Year CIP. The commission identified the development of Williams Park and a splash pad as the top priorities.

Splash Pad Sample <https://www.youtube.com/watch?v=RyBTiTHy9-I>

The Commission has discussed hosting a public input meeting to get feedback from the community about the type of features and amenities that they would like to see as part of a splash pad.

The Commission conducted a survey of Wildridge Park for existing and future improvements in 2024. Attached are the results of the survey. City staff is looking for discussion from the commission on the existing master plan and looking for any modifications to the plan with the understanding that the overall plan would be brought forward public comments/input..

City staff is also looking for input on the city's website as part of increase outreach and promotion of city parks, trails and open space facilities.

City Website

<http://www.ci.north-branch.mn.us/>

City Parks, Trails and Open Space

<http://www.ci.north-branch.mn.us/residents/parks/index.php>

Requested Action

To provide input on the wildridge survey and direction on the website as part of increase outreach and promotion of city parks, trails and open space facilities.

Voting Requirements:

INFO

Wildridge Park Survey

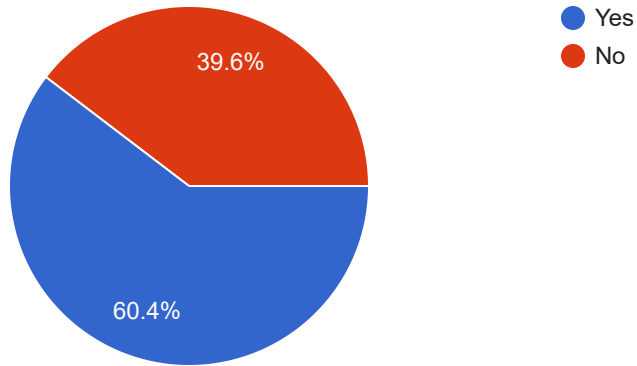
280 responses

[Publish analytics](#)

Do you live within a 10 minute walk of the park?

 Copy

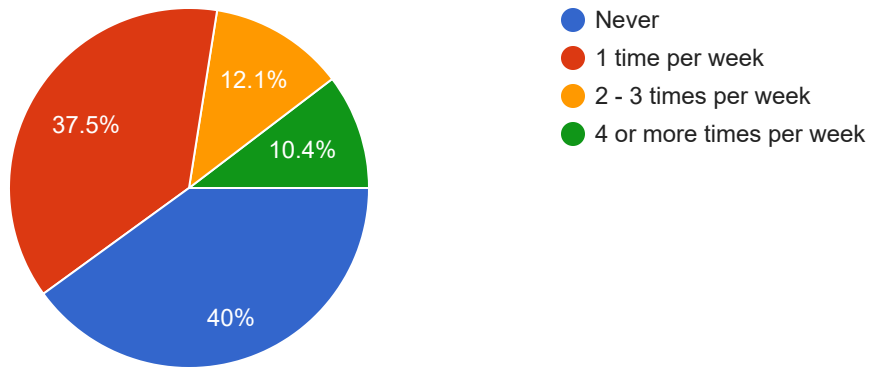
280 responses



How many times per month on average do you visit the Wildridge Park?

 Copy

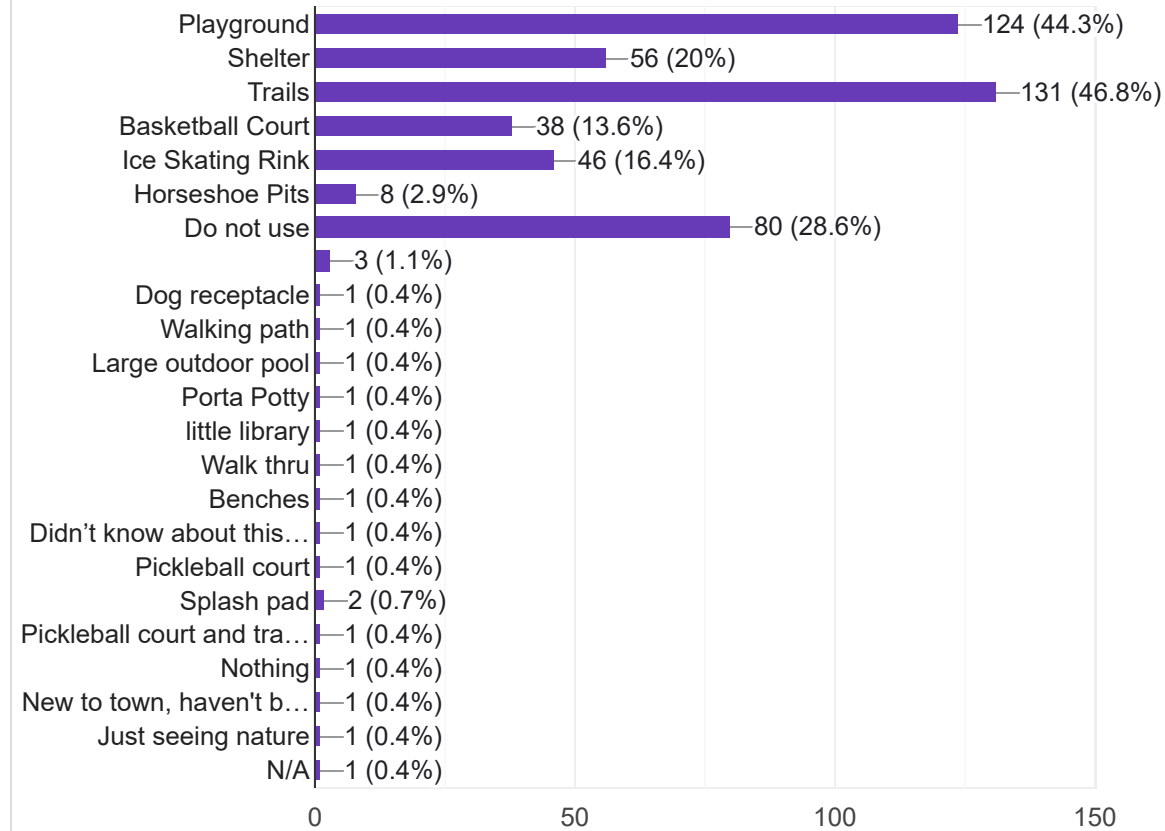
280 responses



What amenities do you use when vising Wildridge Park?

 Copy

280 responses



If other, please describe

17 responses

meetings

Feel the park is a waste , being the neighborhood around is older people

We walk the sidewalks and path through the park daily

Large out door pool (like Rush City). North branch has nothing like that.

Porta Potty

Have not been to park but plan on in future

viewing the beautiful untouched landscape between houses

Enjoy the natural surroundings it presents!

Walk thru

No more parks splash pads etc

Free track for running/walking and pickleball court.amd fitness equipment

Splash pad

Only when my daughter lived there 10 years ago. She has since moved.

New to town, haven't been there yet.

I like to get away from things and be able to appreciate the outdoors.

Little free library

Took grandsons there when they were younger



Are there any additional amenities that you feel are needed at Wildridge Park?



(Please select all that apply)

280 responses





If other, please describe

29 responses

"Age-friendly parks prioritize features that support physical and mental well-being, such as walking paths, outdoor exercise equipment, accessible gardens, and areas for quiet reflection or meditation."

None

I would love to see an area with a pond and walking paths around the pond. Plant wildflowers and plants to promote butterfly and bee population growth. It would provide for the wildlife in our area. Wildridge has a good population of gardeners that would likely help.

Skate park, more outdoor activities for kids

Leave as is for the beauty of grassy field and untouched landscape between houses

off street parking, attendant to keep the warming house open, keep lights on at skating rink, next to skating rink could a sliding hill be created by the pit, more benches for sitting

It should remain a green space. Free from concrete and asphalt.5(())

A pool in addition to the the spray/splash pad

fruit and nut trees, berry bushes, grapes, blueberries, raspberries, some deer resistant annual vegetables (rhubarb, squash, tomatoes etc) - free healthy food for all

Would like to see a larger playground

Open field for other outdoor activities (volleyball nets, corn hole, football etc.)

More for families and kids

Baseball/softball field

Pool!

Maybe only do one soccer field and a swimming pool

A place for community members of all ages to swim and recreate around water related activities preferably year round. NB offers little in terms of aquatic recreation, either through the parks system or the schools. It's unconscionable that a community this size does not have an indoor pool for public use somewhere in town besides in a hotel.



Sport court for those in the area who play para sports such as power soccer.

Nothing

Signage on Falcon Ave

na

Not interested in promoting more non resident traffic in our somewhat quiet neighborhood

Complete the master plan as designed.

Nothing else needes

Plant trees and/or a wildflower prairie and a winding walking/bike path through it. Build natural beauty that will stand the test of time as North Branch continues to grow and lose our natural beauty.

Update playground. Handicap swing

I am handicapped and it is hard to find trails made to facilitate people with walkers.

Nothing

I would like park area left as an open space used for wildlife and pollinators, much like it is today .

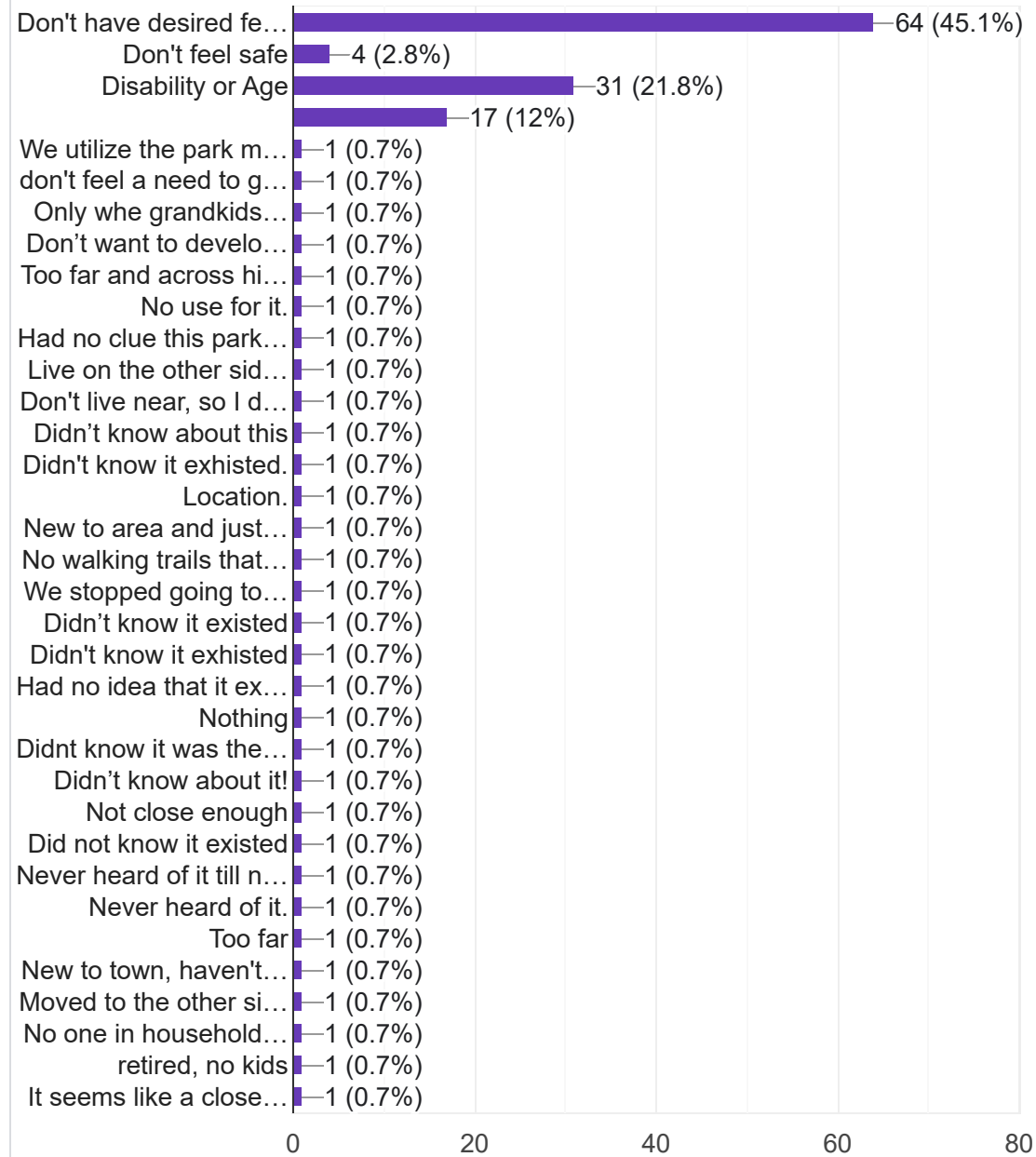
no one uses existing basketball court. eliminate court & put in dog park





If members of your family do not use Wildridge Park, what are the reasons?

142 responses



If other, please describe

32 responses

Our development, Wildridge, is great for walking. This includes the park.

Don't use

A lot of the homes around park do not have children

Like the park as is.

Used it more when grandkids were younger.

We enjoy open space trails, with trees or field. Nice to be on a trail not looking at homes.

They drive for more specific parks.

New resident

Have no need to

Kids have grown too old to play at the park. Would need pickleball courts or something to appeal to adults to use park more now

too many parks in North Branch-too expensive to maintain-use the money to start bringing some business to town instead of concentrating on parks in every development.

Regardless of the "free" money thrown at us, we should reject the offer and begin a trend in reducing frivolous spending.

No use for the park area. Another reason I need to move out if this damn neighborhood!

Had no clue this park existed.

lack of parking

Our whole family loves pickleball

More for families and kids

I did not know it existed. I live east of hwy 35 and would not visit as other parks closer to me have similar facilities



We tried skating there once last winter and the ice was horrible. Full of ridges and bumps.

Would love to have a place for outdoor fitness that free lile a track, pickleball courts, outdoor fitness equipment

Didn't even know it was there

Need more for all ages , splash pad would be amazing to have along with more basketball courts

Not close enough but would consider with the right additions

It feels like we're invading that neighborhood. Can't bike on Falcon Ave.

Not needed

No splash pads

Never heard of it until the surgery was posted on fb

To far.

I am a grandparent who is handicapped and I like parks that allow for my access and fun for the grandchildren.

No need to go to the neighborhood

We are hoping that a splash area will be created in north Branch

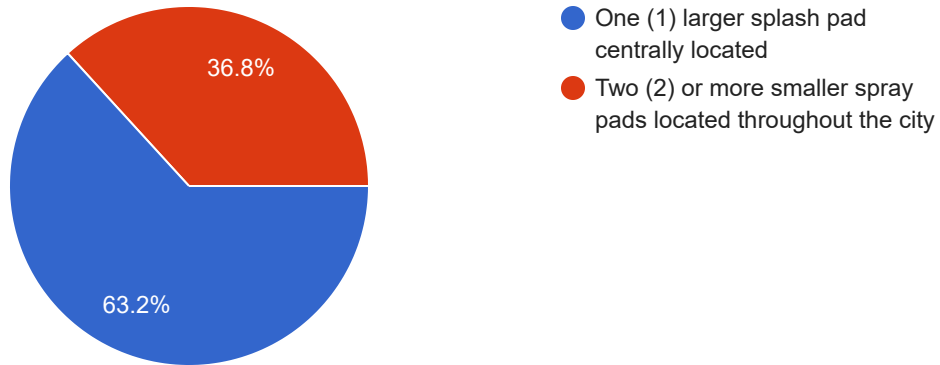
Needs lighting for safety





The City has identified a splash pad as one of the top priorities for a future park improvement within the city. Would you rather have the city have 2 or more smaller spray pad features located throughout the city, or 1 larger splash pad more centrally located?

280 responses



Please provide any additional comments or suggestions for Wildridge Park.

59 responses

test

My concern with splash pads would be the long-range costs and potential health issues.

So you update park so we have people from other neighborhoods using our park?

Noise barrier between the senior townhouses on 384th Trail and the park

I don't want any. Look at the history and maintenance of these splash pads. I would like to see that study before committing. What you just did is force an answer to skew your predetermined decision. Interesting

I am very concerned about the traffic and safety of bringing additional traffic to the neighborhood. If the park were on the outskirts of the neighborhood it wouldn't create the same safety issues. I also have a concern that current resident are cutting the grass that belongs to the city in the park. Does this not open up the city for liability? Can signs be put up or residents be sent a letter to restrict them from cutting the grass/weeds/wildflowers on the city land? They are cutting milkweeds and flowers that help the butterfly and bee population.

Make a lope walking trail around the park.

Walking, biking, snowshoe, cross country skiing trails

With a splash pad, a large pool is needed

I would prefer Zero splash pads. I don't feel we would get true value as residents

382nd street is getting busier with the continued Wildridge development. Given the age of the residents of Wildridge, I do not think soccer fields would be used by Wildridge residents and would create a traffic issue for those who live by the park. In my opinion, additional walking trails with a park bench or two would be great.

leave the said "park" as is. The noise, additional parking and obstruction of a multiple play and court center would lower the property values of our homes. Destroy the peacefulness of the community we chose to moved into in the first place. The community of Wildridge North Point has no children, I believe the youngest is 59 years old, most are high 60's to 80's.

Leave it the way it is , no room for parking on the streets.

2 soccer fields is too many, and traffic and parking could be a real hassle.



keeping the park nicely mowed and trimmed

Pickleball courts would be very popular and having more in the city would be welcomed.

no splash pad needed

no splash pads

We only need one soccer field, but would use a pickleball court if we had one. Thank you.

Remove one soccer field add a pickleball court.

Leave it undeveloped. More important to preserve the natural beauty than provide a small group with play space.

Don't want 'outsiders' importing crime or drug use in these spaces.

There is just not enough parking to accommodate soccer fields. People would walk across yards and the traffic would not be good. It is a nice nature area that could accommodate outside exercise, walking, biking and maybe a dog park being this area cannot have fencing. The only other dog park is on the east side of town. One on the west would be fantastic..

Leave the park as it is

We don't want the traffic through WildRidge neighborhoods , no splash pads, no Soccer needed in this development!

Whatever is done there has to be parking. On the street will not be good for those who live around the park.

Would like to see the money for splash pads used for a larger playground system, splash pads are very seasonal and cost to upkeep.

Keep hockey rink, just update it, maybe smaller basketball hoops for littler kids. Only 1 soccer field is needed. More sports activity areas for kids/people of all ages.

The traffic in this area is going to become crazy! I didn't move into this area expecting additional traffic. Putting that parking lot in next to house - shame on the city!! Kids ride their bikes - wait until someone gets hit by cars. One more reason to move - high taxes, stupid cost of water & now this. Unbelievable!!

Keep wildridge as it is and add paved trails along the perimeter for the many older and working families and children in the area

Tree trimming around the playground is also long overdue



Please consider the splash pad project somewhere lots of eyes will be able to see it.
Northwoods park is falling apart

If you build a playground please look into Burke playgrounds. I went to one in Lacrosse WI. Had 5 big slides and a zip line swing my kids would play all day

eliminate the small soccer field and basketball court and use the space for parking lot.

We live in one of the houses that will back up to the new soccer fields. This development seems like it will add a LOT of traffic and be noisy for those of us who live right next to it. There should be a tree line to define our yards so people are not just walking in our yard.

Parking seems lacking.

What is a splash pad?

If this park goes through, I'd love to see a MASSIVE improvement in Falcon and 382nd. I live in Foxglove Ct and cars fly by our house often. This would only make matters worse. Better speed monitoring or more signs reminding people of children present.. its a neighborhood, not a race track.

A bathroom connected to city water/sewer would be nice addition. I would also like to see a parking lot because there is limited street parking due to the surrounding housing development.

N/a

Bathrooms and drinking fountain near recreation actives would be amazing

A parking area is needed if you are expanding the park size and amenities, but please keep the ice rink and warming house somewhere in the space.

Stop spending our tax dollars, people live up here to get away from the cities and don't need to be entertained.

I hope the ice rink stays! It was a big reason we love this neighborhood when we moved here. It would be even better if it had hockey boards even if it's a smaller rink, and a smaller non boarded ice rink for figure skaters and little tykes .

Toilet facilities vs portapotty would be best

Why that neighborhood? Buried that far back in there, it's only for them. There is a small park off Falcon, south of 68. We went there.

na



No splash pads

No splash pads they are unsanitary, money can be better used. There needs to be a third option for the question regarding splash pads above the third option should be no splash pads. The survey is assuming we want splash pads based on that question. Add the third option of no splash pads and re-do the survey so it can be accurate.

I think one large splash pad and one small splash pad would be nice.

Not needed at all

Lack of parking and traffic will be an issue for neighborhood residence. Keep that in mind.

Thank you for being open to ideas.

Do not want Soccer fields, etc due to noise, traffic congestion. We have a very nice quiet neighborhood community & park....do not want that to change!!

Harder Park and Checkerboard Park

No splash pad not enough kids in neighborhood

Don't see any reason to add anything else to park. NorthPointe is a private street so we don't want people trying to drive through. Our gat is only at one end

There is not enough parking area needed for soccer fields players and spectators would be parking up and down our side streets and 384 th trail and 384 th court are privately owned .

No soccer fields

more screens/buffers needed (landscape or fixed) at west side of basketball court, north side of large soccer field, east side of small soccer field



Please provide any additional comments or suggestions for other North Branch Park, Trail and Open Space Improvements/Suggestions

67 responses

test

Trail system that connects the west end housing to the bike trail.

Don't want the fields in Wildridge. Don't need the extra traffic and noise. Build somewhere else

Why do we need 2 soccer fields? I would think that 1 would do.

Keep it mowed and get rid of the poison oak

This will be a traffic nightmare and safety issue if soccer fields or splash pads are installed. I can't even imagine in a neighborhood filled with elderly. Seems a little short sighted without the safety issues being addressed.

Please plan a fence between the new park features and the homeowners on 384th trail.

Thank you for asking opinions of residents of north branch.

Continue to maintain and care for what we have. Currently I feel we have a lot and it is underutilized by residents.

I do not want things such as soccer fields, pickleball courts, splash pad, etc at Wildridge Park as it will significantly increase the amount of traffic coming in and out of the neighborhood, which then becomes an increase safety risk for accidents, vandalism, etc.

No changes to North Branch Park. Leave as "Open Space" Add walking paths only.

I don't care for the soccer fields idea. I would think that would increase traffic on a residential street. Parking would be a problem. I'd prefer to have a walking/bike path.

Would like to see the bike trail go from North Branch to Pine City

We don't need the heavy traffic in our development.

appreciate the new sign on 382nd. Thankyou

a safe way to cross over the exists over the overpass on 35 by bike or walking:a bike trail going south of falcon avenue hooking up to county rd 17 so we could cross over to the Sunrise Bike Trail east of Falcon Ave.



Do not want soccer fields in wildridge park!

Leave it as is. Don't want more traffic in our quiet neighborhood. More people from outside the development will have a negative impact on the quality of life in Wildridge.

Vehemently opposed to this.

Walking/ running trails would be perfect for this development

Address weed problems and maintain properly

1)Need to connect Branch Ave with Sunrise trail with sidewalk. Side walk currently on a side rarely used and causes crossing a busy street twice. 2) Need to connect Sunrise trail on south side of St Croix Trail with trail on north side. It just dead ends into busy road.

If not in Wildridge somewhere in North Branch there needs to be a large playground. Multi age. Examples are in Hugo or Shoreview. These large parks are an attraction for many ages.

Please consider improving the playground at north wood parks and the splash being centralized.

Don't do soccer field, thru won't get used, do more tennis/pickleball/basketball

Community pool, splash pad and a fitness center!

This entire towns needs more dog park options. Spray for mosquitoes at checkerboard. Thanks!

Keep the druggies out of the parks. We don't feel safe leaving our car in the parking lot at the river walk park.

walking trail along Falcon and Flink

I am not sure if this is posted and if it is, where to find the information. For city parks that have bathrooms connected the the city water/sewer, when are they closed/opened for the season? When are the port-a-potties removed/returned to city parks? As a parent to small children, it would be beneficial to know when planning park visits.

The pickleball court at Northwoods, is fantastic

Please ensure that this is accessible for all people in the community and all abilities. I have yet to see an inclusive playground be added to the city but have been told there would be in meadows north. It is not wheelchair accessible for people with mobility devices or those with difficulty walking.



Is this funded with Grants or tax dollars?

Your optional answers for frequency of use are lacking and will skew your results. We probably use the park 1x per month or less, but this is directly an affect of having few amenities and a small playground. If it were a bigger playground, splash pad or pool and better restrooms, we would visit at least once per week or more.

City needs another Dog Park

We need more industrial development so residents can work and live here instead of commuting, should reduce property taxes as well!

Didn't know park was there. You need to advertise more. I have lived in town 26 years and had no idea this was here.

I would love a splash pad in North Branch, but definitely not in Wildridge. Seems like an odd location, especially for those of us on the east side of NB. I also do not want my property taxes going up anymore. City wastes so much money and our taxes are already. If there's not a tax increase I'm all for it.

Could a splash pad be considered on the open lot off of Main Street where the school used to be?

Better playground equipment and more geared towards babies and toddlers and those with disabilities like the Hugo Lions park or Shoreview Commons park. We need a sandbox at one of these North branch parks too. Also get rid of all the wood chips and rocks at these parks, fake turf or recycled rubber would be much better especially for those new little walkers and those with disabilities. Lastly we need a playground that is fenced in for better safety for our children and those who have elopement rick children. Please update our city parks. I bring my young children down to Hugo or Shoreview to play because their parks are well maintained and are all inclusive for ages and disabilities.

I live in the neighborhoods off 377th and would love for there to be walking paths that connect up to the Wild Ridge area walking path that runs along Falcon Ave.

Make walking/biking paths connect.

A sidewalk on Falcon south from wild ridge would be amazing

Flink ave needs a walking path from the first bridge to at least the new paths put in. The bridge is narrow for bikes and walking people with all the extra traffic from new homes.

Extend the trail from the middle school to Castleberry, make it go to the 2 developments past Castleberry so we don't have to ride bike on 14 anymore to get to it.

I just want a basketball court with new nets and even ground. I play at Central Park almost daily and the court has uneven ground resulting in tripping sometimes and the net is usually



ripped or basically gone. Thank you for listening to my rant!

Indoor or outdoor pool would be great! YMCA would be even better!

Additional seating benches

Make a park where the old school was. Pavilions, basketball, sandboxes, swings and jungle gym

Overall the inclusion of summer areas to cool off would be nice (not checkboard park). We have plenty of winter activity things in the area.

Stop spending money

When can we expect the master plan for Wild Ridge Park to be completed?

Bike trail along falcon needs to go all the way in to town. Falcon also needs a slower speed limit

Do not put soccer fields in the middle of a development.

Please complete a direct trail/walking path from WildRidge Park to 95. You currently have to cross the street many times to be able to walk on a path. It's unsafe crossing the street (Falcon) so many times and if more people will be using Wildridge Park, that safety piece should be provided for to get there.

Thank you for asking, Clara Ries, North Branch

The more outdoor activities, the better.

Please continue to make nature and our environment a priority in your planning. Also please think about how senior citizens use parks as outdoor spaces to get out of their homes and relax. I am sure you know we need a swimming pool somewhere.

Please maintain & repair existing parks under your auspice before undertaking new major projects. All of the old cedar sandblasted signs are weathered & worn out, including the one at my grandfather Roger Johnson's Memorial Park. I've written multiple times about this, and the best they could do is remove chips.

Splash pad not in wild ridge area or neighborhood. Less apartment buildings and townhomes being built

Thank you for asking for input. A dog park is desperately needed - possibly one side for larger dogs and one for smaller dogs.



Splash pads are a great idea. If we add soccer and/or splash pads, we will probably need parking as well.

I think a splash pad would be great for the community!

No comment

Don't think a park would benefit our neighbor hood due to the average age is retired

The whole city block just east of Grandstrand funeral home would be the perfect place for soccer fields, lots of space and centraly located

Please install potable water fountains/bottle filling stations, especially in Central Park. I am also very pleased at the proliferation of comfortable seating in our beautiful city, and the lack of hostile features on our benches designed to prevent our unhoused neighbors from relaxing in our public spaces - please keep up the good work. Thank you!

Continuous (uninterrupted) paved paths to get around would be most helpful and enable biking with kiddos. There are several start/stop trails in the Wildridge neighborhood, making it a challenge to go for longer bike rides without getting on the busier (and more risk) roads.

convert existing city tennis courts into pickleball courts

This content is neither created nor endorsed by Google. [Report Abuse](#) - [Terms of Service](#) - [Privacy Policy](#).

Google Forms





Wildridge Park Survey

